



## H11 - Thematically rendering a SWMM 5 layer based on results

This how-to page reviews how to thematically render a SWMM 5 layer based on results. For this hot-to page the conduits layer will be rendered based on the *Max flow ratio* however the steps still apply if you wish to render using a different layer or attribute.

This exercise assumes you have a SWMM5 model and have successfully ran it and was able to produce results.

1. If your model results are not up to date click on the **Run**  button.
2. In the **Map** panel click on the **Render**  button.
3. In the **Layer properties** window specify the layer that is to be rendered, in this case the **Conduits** layer has been selected.
4. In the **Thematic mapping** section select *Max/Full Flow* as the attribute to be rendered. When rendering numerical values a scheme gradient can be selected from the drop down list.
5. The render scheme can be customized depending on what the user wishes to illustrate. With the **Layer properties** dialog still open click on the **Advanced** button.

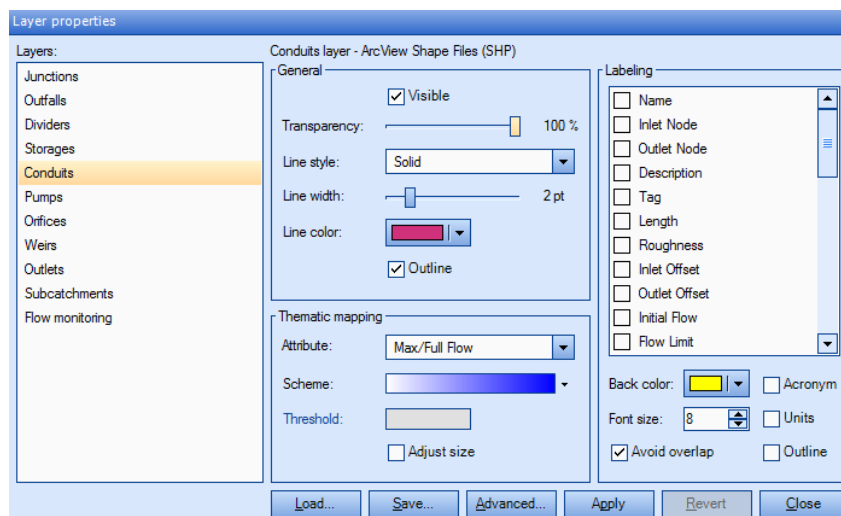


Figure 1 - Layer properties window

6. Advanced window will appear. Select the **Render** tab to open the rendering options.
7. You are able to change the rendering scale to define the color schematic you wish to use. The wizard button can also be used to create custom rendering.

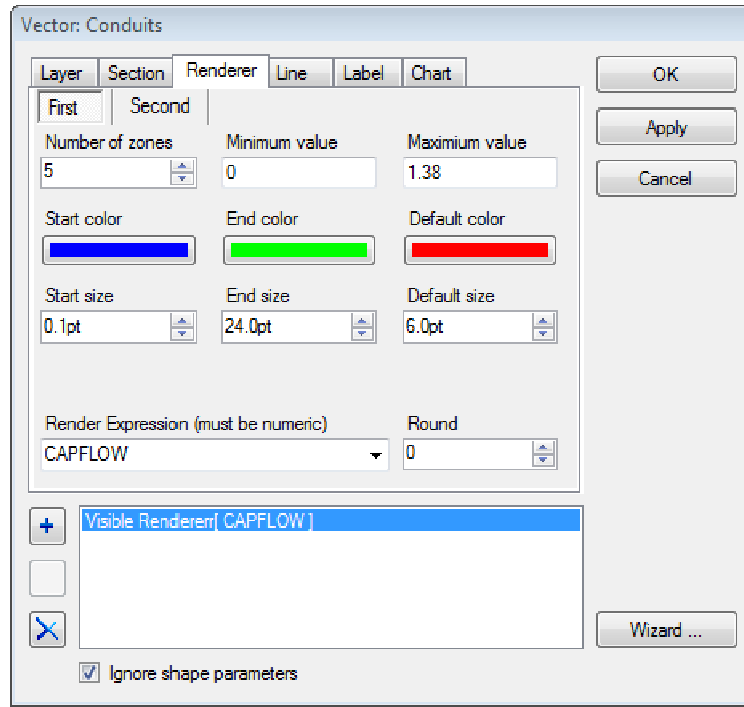


Figure 2 - Advanced layer property window displaying renderer tab

Updated last: November 15, 2011

Version: 4.4